

VACUUMETER/BAROMETER



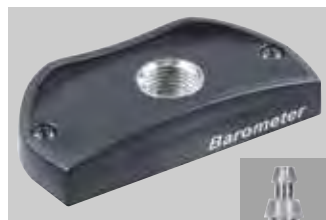
NEW!



NEW: INCREASED VACUUM ACCURACY OVER WIDE TEMPERATURE RANGE!

NEW: UNIVERSAL-PORT FOR THE USE OF A WIDE VARIETY OF PRESSURE CONNECTIONS: SCREW CONNECTION, QUICK-CONNECT, PUSH-PULL: EVERYTHING CAN BE CONNECTED DIRECTLY TO THE DEVICE! YOU HAVE THE CHOICE OF WHICH CONNECTION TYPE IS MOST PRACTICAL FOR YOU – THE DEVICE ITSELF IS THE SAME.

Fig.: The pressure port is interchangeable due to the 1/8 inch port!



SUCCESSOR FOR GTD 1100 AND GPB 3300 - PRODUCTS

G 1111-UT

Item No. 478474

Vacuummeter/barometer with pressure connection, 1/8 inch port including connection for tubes 6x1 mm (4 mm inside) and 8x1 mm (6 mm inside)

G 1111-QC6

Item No. 479433

Vacuummeter/barometer with pressure connection, 1/8 inch port incl. quick connector for tube with outer Ø 6 mm

G 1111-ST6

Item No. 479431

Vacuummeter/barometer with pressure connection, 1/8 inch port including screw connector for tube with outer Ø 6 mm

G 1111-UT-SET

Item No. 478475

Vacuummeter/barometer with pressure connection, 1/8 inch port including connection for tubes 6x1 mm (4 mm inside) and 8x1 mm (6 mm inside), measuring instrument incl. 1 m tube 6x1, case GKK 1002

G 1111-QC6-SET

Item No. 479434

Vacuummeter/barometer with pressure connection, 1/8 inch port incl. quick connector for tube with outer Ø 6 mm, measuring instrument incl. 1 m tube 6x1, case GKK 1002

G 1111-ST6-SET

Item No. 479435

Vacuummeter/barometer with pressure connection, 1/8 inch port including screw connector for tube with outer Ø 6 mm, measuring instrument incl. 1 m tube 6x1, case GKK 1002

G 1111-UT-VAC

Item No. 480644

Vacuummeter with universal port, completely evacuable, with pore filter and tube connection, interchangeable through G1/8 universal port, ideal for rough vacuum measurements e.g. B. in industrial packaging machines, increased accuracy in the vacuum range, key deactivation when a vacuum is applied



GENERAL:

The development of the new G 1111 was intentionally focused on the essential measurement technology functions – a high-quality sensor is the heart of the measuring instrument – and despite the low overall price, no savings were made! The high temperature stability of the sensor together with the universal pressure connection concept increase comfort and safety, especially with vacuum measurements. Precision, speed and reliability, packaged in a compact, water-proof enclosure makes the device a reliable partner of the craft, made in Germany. G1100 Series – the reference class for your pocket!

APPLICATION:

Packaging machine control, monitoring of vacuum potting processes, traceable reference for ambient conditions/meteorology, smartphone & GPS or flying altimeter

HIGHLIGHTS:

- State-of-the-art and functional housing – in pocket format
- Excellent price-performance ratio
- 3-line illuminated display/overhead display at the push of a button
- Waterproof (IP67)
- Robust, long battery life
- Optimized for vacuum measurements
- High resolution and accuracy
- Very fast!
- Calibratable/traceable
- Made in Germany

TECHNICAL SPECIFICATIONS:

Measuring range / resolution:	0.0..1700.0 hPa abs, units can be selected: (hPa, mmHg PSI)
Measuring frequency:	Slow: 2.5 measurements / s Fast: 25 measurements / s
Overload:	3000 hPa abs.
Accuracy (device):	typically $\leq \pm 2$ hPa @ vacuum, $\leq \pm 2$ hPa @ 1013 hPa, @T: $+5 \dots +30$ °C 0.3 % FSS max. Option-VAC: @ 0 ... 20 hPa: ± 1 hPa (@ 10..30 °C)
USPs:	Best in class: Vacuum exactly even at low temperatures Universal port pressure connection Optional sensor protection against particles / Resins...
Sensors / measuring inputs:	1 universal port
Protection class:	IP67 complete
Display:	3-line with battery status display, background lighting, protected by a break-resistant pane, overhead display at the push of a button
Additional functions:	Sea level correction
Additional functions in general:	Hold, min / max value
Selectable special functions:	Tare function Average value mode for measuring strongly fluctuating pressures
Environment:	Display device $-20..+50$ °C
Battery / lifetime:	2 x AA batteries, approx. 3000 h
Housing:	break-resistant ABS housing
Dimensions:	108 x 54 x 28 mm (H x W x D) without pressure connection
Weight:	approx. 140 g including battery
Scope of delivery:	Device, batteries, operating instructions, test report

ACCESSORIES OR SPARE PARTS:

ISO-WPD5

Item No. 602514

ISO calibration certificate: Factory calibration pressure, 5 points rising and falling, max 600 bar

ISO-WPD10

Item No. 602565

ISO calibration certificate: Factory calibration pressure, 10 points rising and falling, max 600 bar

GDZ-34

Item No. 479742

Plastic pore filter with screw-in thread G 1/8, for direct application in Vacuum packing machines

GDZ-35

Item No. 480328

Self-adhesive filter membrane Ø 7 mm, to protect the sensor from potting compound, etc., 10 pieces



VACUUMMETER/BAROMETER



NEW!

Fig.:The pressure port is interchangeable due to the 1/8 inch port!



HIGHLIGHTS:

- Measurement resolution and accuracy guarantee reliable results
- Measuring range 0 .. 14000 hPa (mbar abs.)
- High accuracy in the vacuum range
- Very fast measurement for efficient use
- Modern and functional housing in pocket size
- 3-line display / overhead display at the push of a button
- Backlit
- Waterproof (IP67)
- Robust, long battery life
- Simple universal pressure connection with interchangeable connections
- Calibratable / traceable



G1114-UT

Item No. 478477

Vacuummeter/barometer with pressure connection: G1 / 8 inch port including connection for tubes 6x1 mm (4 mm inside) and 8x1 mm (6 mm inside)

G1114-UT-SET

Item No. 478478

Vacuummeter/barometer with pressure connection: G1 / 8 inch port incl. connection for tubes 6x1 mm (4 mm inside) and 8x1 mm (6 mm inside) measuring instrument incl. 1 m tube 6x1 PVC, case GKK 1002

G1114-MCM

Item No. 480853

Vacuummeter/barometer with pressure connection: G1 / 8 inch port including mini quick-release connector, nominal width 2.7 mm

G1114-QC6

Item No. 480374

Vacuummeter/barometer with pressure connection: G1 / 8 inch port incl. quick connector for tube with outer Ø 6 mm

G1114-ST6

Item No. 480852

Vacuummeter/barometer with pressure connection: G1 / 8 inch port including screw connector for tube with outer Ø 6 mm

APPLICATION:

High-resolution barometer/manometer. Covers pneumatics with 1 mbar resolution up to 14 bar! Can be used as a relative pressure measuring instrument (perform "tare" without pressure) or as an absolute pressure measuring instrument (starts at ambient pressure, e.g. 970 mbar = 970 hPa).

TECHNICAL SPECIFICATIONS:

Measuring ranges / resolution	0..14000 hPa (mbar abs.)
Measurement frequency	Slow: 2.5 measurements / s Fast: 25 measurements / s MB x 2
Max. Overload	20000 hPa abs.
Accuracy typ	+/- 0.1 % FSS or +/- 0.1 % of reading (@ 25 °C)
Accuracy max. -20..50 °C	+/- 0.5 % v. MW +/- 0.1 % FSS
Display	3-line segment LCD, additional symbols, illuminated (white, light duration adjustable), overhead display at the push of a button
Standard functions	Min / Max / Hold, Auto-Power-Off-Function / If activated, the product switches off automatically

Switchable special functions Sea level correction, ZERO / tare function, AVR: averaging over 2 s / 5 s / 10 s

Adjustment	Zero point and slope adjustment
Housing	Break-proof ABS housing, protection class IP67, dimensions L x W x H: 108 x 54 x 28 mm without pressure connection, weight: 140 g including battery
Working conditions	- 20 to +50 °C; 0 to 95 % RH
Storage temperature	-20 to +70 °C
Power supply	2 x AA batteries (included in delivery), power consumption: approx. 1 mA (slow measurement SLO), battery life approx. 3000 h, battery indicator 4-stage battery status display, note: when the charge status is low: "BAT LO"

ACCESSORIES OR SPARE PARTS:

ST-G1000

Item No. 611373

Protective case, leather, G 1000 Protective case made of Nappa leather, a universal recess for sensors, belt clip

GCLIP 1000

Item No. 475820

Metal belt clip, self-adhesive for G1000 series

GDZ-UT

Item No. 479260

Pressure socket for tube 6/4 or 8/6 with screw-in thread G 1/8, brass nickel-plated

GDZ-QC6

Item No. 479261

Quick connector for tube 6/4 with screw-in thread G 1/8, brass nickel-plated

GDZ-ST6

Item No. 479466

Tube screw connection for tube 6/4 with screw-in thread G 1/8, brass nickel-plated

GDZ-MCM

Item No. 479467